



# SPK<sup>\*</sup>

## FINITION

RANGE DEDICATED  
TO METALWORK  
AND MECHANICS

### DEBURRING MACHINES

**Deburring - Descaling - Surface preparation  
Angle shelving - Deoxidation of edges - Dry degreasing**

**SPK<sup>\*</sup>**  
SOLUTIONS

by SPALECK INDUSTRIES

## PRESENTATION

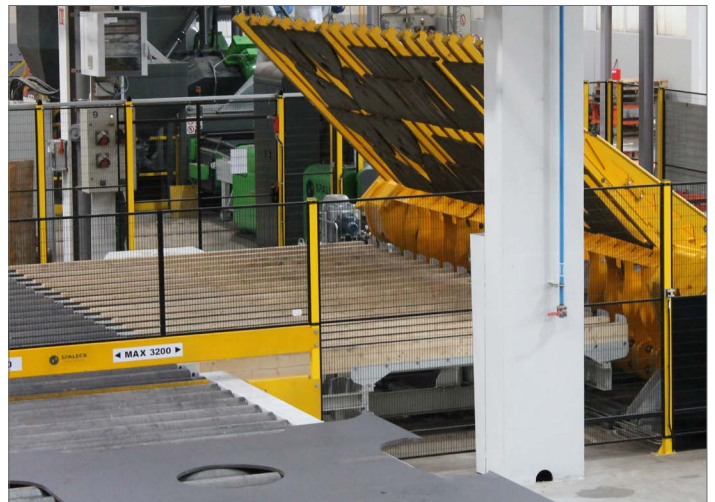
### BUILDER AND INTEGRATOR OF FINISHING EQUIPMENT

Historically manufacturer of deburring tumblers, we have developed global finishing solutions. Nowadays, our know-how, expertise and our skills extend to the supply of deburring machines, of small and high capacity, until the design and installation of a complete finishing line.

In each project, we are the provider of technical information which allows to tackle finishing matters as a whole :

- The engineering of the technical mean (of our concept or in integration).
- Installation of the mean in the production flow.
- Profitability of investment.
- Energy saving.
- QHSE issues (quality, hygiene, security and environment).

Descaling, degreasing, trimming, deburring, deoxidation, edge rounding, stripping by tumbling or brushing represent our know-how field of expertise.



### MACHINES, EQUIPMENTS AND SERVICES

**SPK**

**SOLUTIONS** refers to the set of our skills. A programm made of five leading brands specially adapted to needs of the ordering customers in a variety of sectors.

#### **SPK AERO**

Range dedicated to the finishing of machined aeronautical parts.

#### **SPK FINITION**

Range dedicated to parts of metalwork, boilermaking and sheetmetal work.

#### **SPK INNOVATION**

Engineering services and Research & Development.

#### **SPK EQUIPEMENTS**

Peripheral equipments.

#### **SPK SERVICES**

After-sale services, spare parts, consumables, training.

### FIELDS OF ACTIVITY

SPK SOLUTIONS, via its different range of machines meets the requirements of technicality, and the need of profitability and robustness. We put our skills and knowledge particularly at the disposal of:

- AERONAUTICS SECTOR
- METALWORK
- MECHANICS
- PRECISION MACHINING
- MACHINERY
- STRUCTURAL STEELWORK
- INDUSTRIAL METALWORKING
- MECHANIZED WELDING WORK
- LOCKSMITH WORK

We are also here to help you for projects in other fields.

## KNOW-HOW

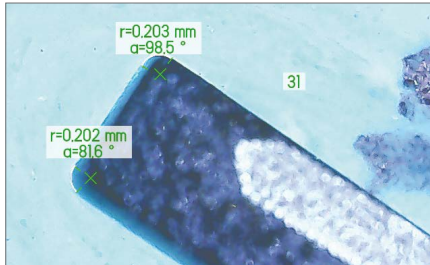
SPK SOLUTIONS offers global and complete finishing solutions adapted to its customers. The company relies on a multidisciplinary team of experts. We focus on our core business, that means conception, assembling and services. Our flexible organization allows to set up external qualified resources.

CONSULTING	CONCEPTION	MANUFACTURING	ASSEMBLING	TECHNICAL SUPPORT
<ul style="list-style-type: none"> <li>Technical trials</li> <li>Process and setting up definition</li> <li>Cost-benefit studies</li> <li>ROI calculation</li> <li>Finance leasing</li> </ul>	<ul style="list-style-type: none"> <li>Mechanical design</li> <li>Automatism conception</li> <li>External engineering office</li> </ul>	<ul style="list-style-type: none"> <li>Purchasing and subcontracting from a reliable and organized network (regional expertise)</li> <li>Manufacturing site partner</li> </ul>	<ul style="list-style-type: none"> <li>Qualified workers team</li> <li>Assembling procedure in case of subcontracting</li> <li>Training of production workers</li> </ul>	<ul style="list-style-type: none"> <li>Technical support via preventive maintenance contracts</li> <li>Intervention in case of remedial maintenance</li> <li>Remote intervention</li> </ul>

## MEANS OF PRODUCTION

We have recently integrated new premises in order to have optimum manufacturing conditions and also to install a new testing and sub-contracting center for our customers.

Thus, an area of 1400 square meters is available to design, to test, to assembly an.



## REFERENCES

In addition to being respectful of the environment, our range of products has been granted by the trust of manufacturers and industrial sub-contractors such as:

**AIRBUS - SNCF - STELIA - LIEBHERR - JOHN DEERE**  
**LATECOERE - CATERPILLAR - AIR LIQUIDE**

## ▾ ROBUSTNESS AND PROFITABILITY



ROBUSTNESS AND  
PROFITABILITY

This range of finishing machines has been developed for the metallurgy and mechanical industries (precision machining, equipment, structural steelwork, industrial sheet metal work, metal fabrication, metalworking, etc.). Our small, medium and large capacity deburring equipment allows us to respond appropriately.

## ▾ ACTIONS PERFORMED

- DEBURRING
- BREAKING OF EDGES
- DESCALING
- STRIPPING
- DEOXIDATION OF EDGES
- SURFACE PREPARATION

## ▾ PARTS PROCESSED



## ↘ TUMBLING PROCESSES



The treatment takes place in a rotating tank. The parts are mixed around in a load of media that is specially defined for the type of material.

### INTERESTS

- Avoids manual grinding.
- Reduces welding smoke.
- Keeps the mark.
- Silent work and masked time.
- Prepares the parts according to standard NF EN 1090 (radius formed of 5/10)

## ↘ BRUSHING PROCESS



We also have brushing machines for deburring a range of flat parts. The treatment is carried out by a carousel of brushes. Parts are maintained by depression or magnetism. Rotating brushes, whether metal or abrasive lammelle ensure attack from all angles of the pieces.

### INTERESTS

- Avoids manual grinding.
- Reduces welding smoke.
- Keeps the mark.
- Silent work and masked time.
- Prepares the parts according to standard NF EN 1090 (radius formed of 5/10)

1. Abrasive squeegee brush
2. Metal brushes

## ↘ ADVANTAGES

### PROCESS ADVANTAGES

- Low operating cost.
- Increased productivity.
- Post Ergonomics and Operator Safety.



**DIABOLO MODEL**

**PX MODELS**

**MDL MODEL**

**Y MODELS**

# DIABOLO MODEL

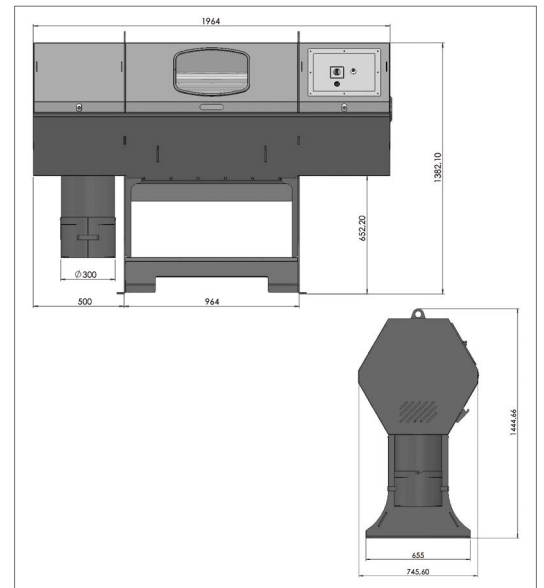
## PRESENTATION

The deburring tank DIABOLO is a compact machine and easy of use. Equipped with a 220 V connection and a suction system, the DIABOLO has all the characteristics of a production tool.



## TECHNICAL DATAS

MODEL	DIABOLO
Capacity	100 liters
Tank	360 x 790 mm
Size of the parts	200 x 750 mm
Parts unit weight	5 Kg
Total load	100 Kg
Rubber thickness	12 mm
Power	2 kW - 1 x 230 V
Opening / closing of the tank	Manual
Loading	Manual
Unloading	Manual or by means of gravity in boxes



## OPTIONS



1



2



3

1. Mounting on wheels
2. Movable partition to create two treatment areas
3. Partition door abrasives / parts

# PX MODELS

## PRESENTATION

Adapted to parts up to 1350 mm, this deburring machine allows to treat comfortably a wide range of parts. It is perfectly appropriated to subcontracting markets, where versatility of machines is essential in order to absorb specific orders. Thanks to the PX 300 deburring machine, it is possible to deburr, radiate, descale small parts but also guardrail.



1



2



1. PX 300  
2. PX 300

## TECHNICAL DATAS

MODELS		PX 100	PX 150	PX 300
Capacity	L	100	150	300
Tank	Mm	360 x 790	360 x 1200	500 x 1400
Size of the parts	Mm	200 x 750	250 x 250 x 1100	350 x 350 x 1350
Parts unit weight	Kg	15	15	15
Total load	Kg	100	150	300
Rubber thickness	Mm	12	12	15
Power	kW	2	3	5
Power supply	V	1 x 230 V	1 x 230 V	3 x 400 V
Opening / closing of the tank		Automatic		
Loading		Manual		
Unloading		Manual or by means of gravity in boxes		
Space required	Mm	1970 x 790 x h 1360	2430 x 790 x h 1360	2560 x 1100 x h 1650
Weight	Kg	600	850	1570
Cast iron pyramids load	Kg	50	75	150
Plastic abrasives load	Kg	60	80	100
Available option		Removable partition in order to compartmentalize the tank		



# MDL MODEL

## PRESENTATION

The deburring machine MDL is an interesting compromise regarding its capacity, cost and robustness. Allowing the path of parts up to 1250 mm, this rustic model is equipped with a suction system and an unclogging system. The opening door system is manual but designed to support the movement of the user, the doors thus remains ergonomical.



1



1. MDL 400

2. Easy opening and closing

## TECHNICAL DATAS

MODEL	MDL 400	
Capacity	L	400
Tank	Mm	600 x 1300
Size of the parts	Mm	500 x 1250
Parts unit weight	Kg	30
Total load	Kg	500
Rubber thickness	Mm	30
Power	kW	4
Power supply	V	3 x 400 V
Opening / closing of the tank		Manual
Loading		Manual
Unloading		Manual
Space required	Mm	4520 x 1150 x h 1600
Weight	Kg	3000
Cast iron pyramids load	Kg	150
Plastic abrasives load	Kg	80
Available option		-

# Y MODELS

## PRESENTATION

The deburring machine Y is a robust model adapted to important production rate. Flexible regarding the needs, this sturdy machine is built in a modular way and can be equipped with loading/unloading accessories in order to facilitate the materials handling.



1



2



1. Y 500 AS TB

2. Y 500 AS TB

## TECHNICAL DATAS

MODELS		Y 300 AS	Y 400 AS	Y 500 AS
Capacity	L	300	400	500
Tank	Mm	600 x 1000	600 x 1300	700 x 1300
Size of the parts	Mm	400 x 950	400 x 1250	500 x 1250
Parts unit weight	Kg	30	30	30
Total load	Kg	400	500	600
Rubber thickness	Mm	20	20	30
Power	kW	5	6	7
Power supply	V	3 x 400 V	3 x 400 V	3 x 400 V
Opening / closing of the tank		Automatic		
Loading		Manual		
Unloading		Manual or by means of gravity in boxes		
Space required	Mm	2860 x 1225 x h 1690	3160 x 1225 x h 1690	3160 x 1225 x h 1690
Weight	Kg	1500	1750	1800
Cast iron pyramids load	Kg	150	200	250
Plastic abrasives load	Kg	60	80	100
Available option		See the following page		

## Y MODELS/OPTIONS

### AVAILABLE OPTIONS

- TB - Tilt hopper (load device by low bins tilting in order to facilitate handling by bridge crane or by forklift ) + 2 bins with rubber covering.
- CH - Hydraulic loader.
- CH TAR - Hydraulic loader and output conveyor equipped with unloading belt and with automatic return of the pyramids into the loading bins.

## APPLICATIONS



1

1. Setting up the unloading bin



# **SPALECK**

INDUSTRIES

1070 Allée Henri HUGONIOT  
F - 25600 BROGNARD

Tel. +33 (0)3 81 47 80 50  
contact@spaleck-industries.fr

[www.spk-solutions.fr](http://www.spk-solutions.fr)

